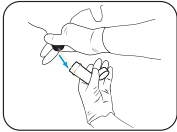


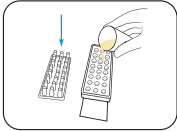
## Fill a Mastatest® cartridge



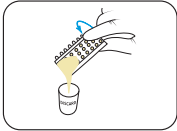
Take a clean milk sample  
(see user videos)



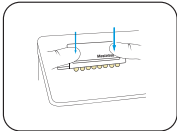
Put on clean gloves, and remove  
cartridge from pack



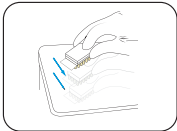
Remove cartridge lid and  
half-fill cartridge with milk



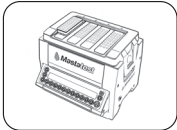
Pour off surplus milk and discard



Replace lid, pushing down firmly,  
and label lid with cow details



Tap firmly 2-3 times, repeating if  
air-bubbles are visible in wells



Insert cartridge into Lapbox™  
with arrows facing to the back  
and replace lid

## Start a Mastatest®

### To Begin:

- From the Lapbox main menu, select *Start Mastatest*
- Select Lapbox position used: If first free position used or scroll to select and

### Option 1: BoxStart

- Select cartridge type:
  - For single (1-test) cartridge, *Clinical*
  - For twin (2-test) cartridge, *HiSCC*
- Select *BoxStart*
- Input cow number (e.g. 00123) and scroll to select quarter
- Confirm start

### Option 2: QuickStart

- Select cartridge type:
  - For single (1-test) cartridge *QuickCM*
  - For twin (2-test) cartridge *QuickSCC*
- Input test details to [mastatestsystem.com](https://mastatestsystem.com) within 21 hours

### Next steps:

- Countdown timer shows the remaining time
- Results emailed within 24 hours
- Further tests can be started independently



Further information and support  
[Mastatest.com/user-guides](https://Mastatest.com/user-guides)  
[support@mastatest.com](mailto:support@mastatest.com)